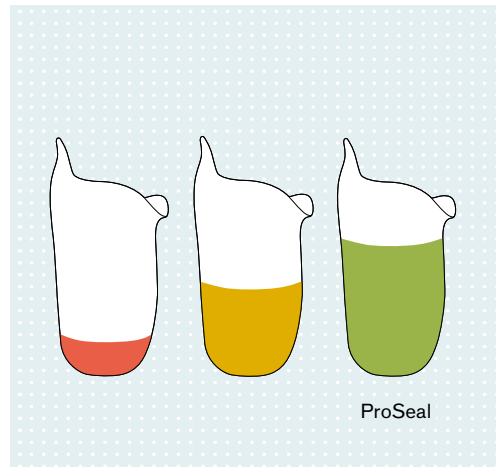
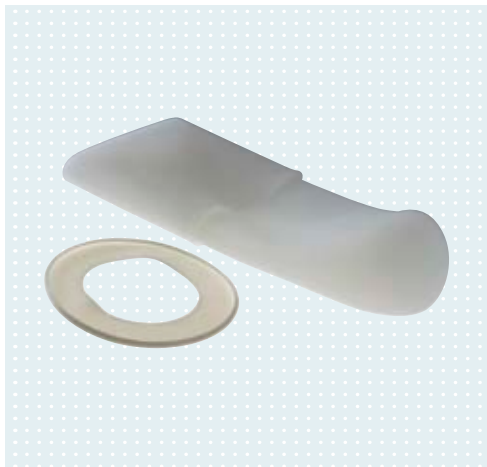
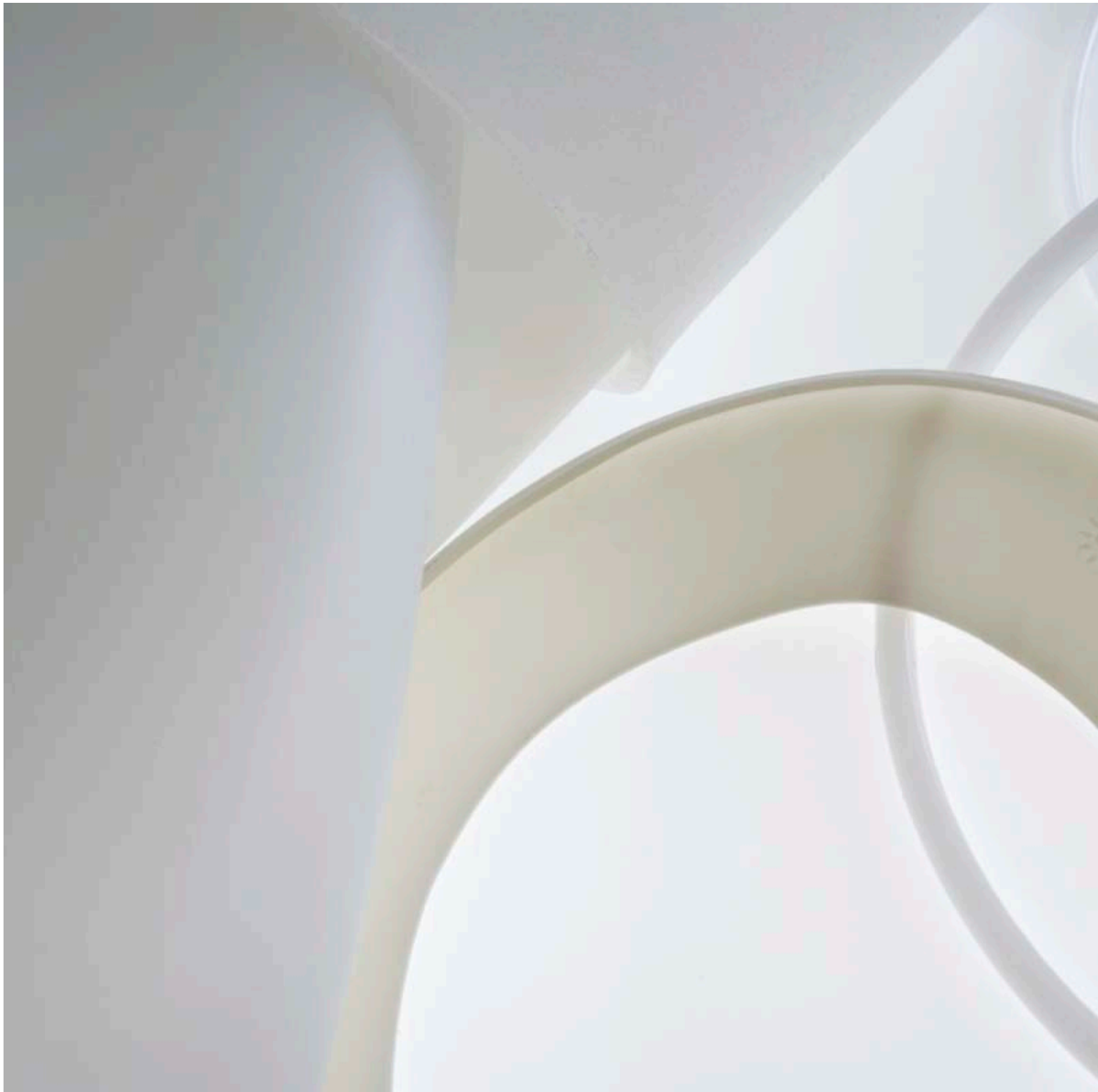


# ProSeal System

Proximal sealing made easy

Quality for life





ProSeal

# What is the ProSeal System?

ProSeal is a system for the proximal sealing of TF vacuum sockets, that excels by its simplicity and ease of use.

## It consists of two components

### **452A1 ProSeal Ring**

A ring to be attached inside of the socket to create the proximal seal for the vacuum system, e.g. fittings with a ClickValve.

### **6Y81 ProSeal SIL Liner**

A silicone liner without textile component, serving as the connection between the skin, the socket and the ring. A non-sticky exterior surface coating makes it easy and comfortable to slide the residual limb into the socket.

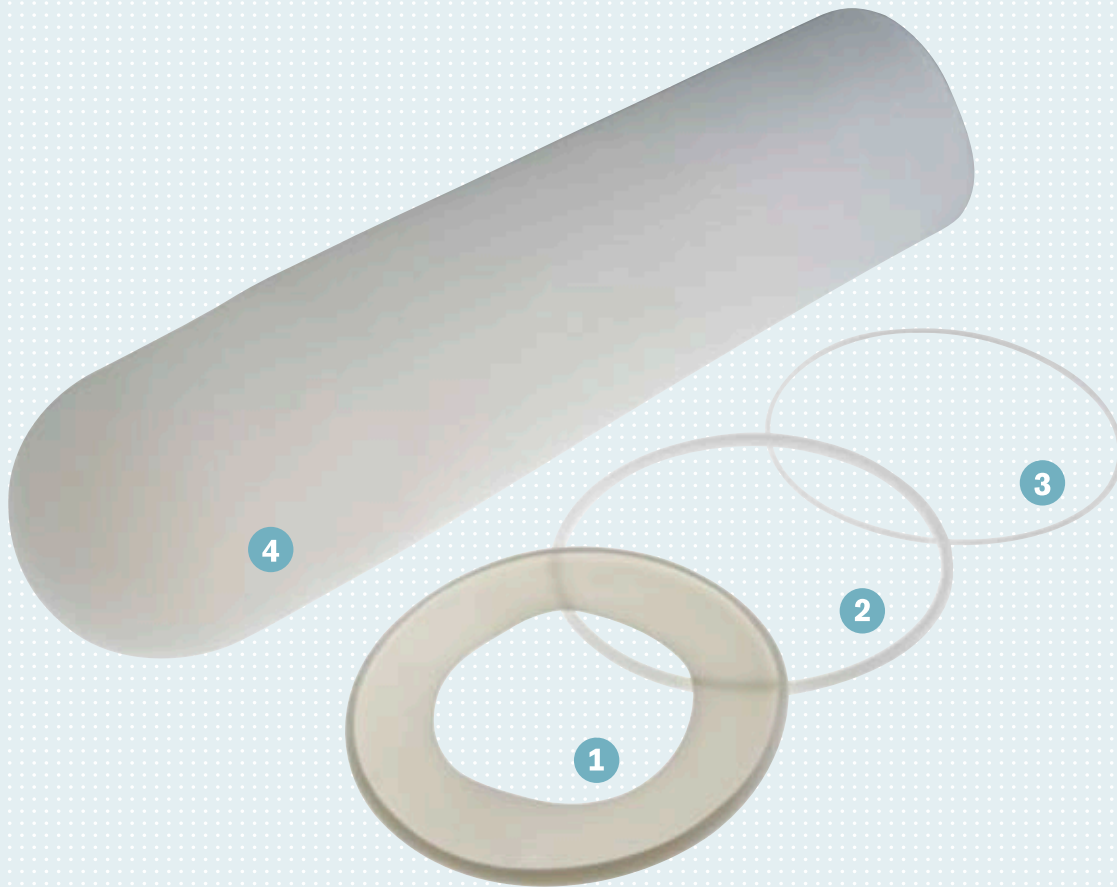
---

#### • ProSeal System

Enlarges the effective vacuum surface

# ProSeal System

## At a Glance



### **452A1=\* ProSeal Ring**

- 1 Sealing ring
- 2 Dummy for laminating/vacuum forming
- 3 Flexible mounting ring

### **6Y81=\* ProSeal SIL Liner**

- 4 3 mm silicone liner with non-sticky coating on the outside and silky surface structure on the inside

# ProSeal System

## Features & Benefits



### **Proximal seal for vacuum sockets in trans-femoral fittings**

- Larger effective vacuum surface
- Better adhesion over the entire socket surface
- Individual positioning of the sealing lip (30-50 mm below the perineum)

### **Easy installation by the prosthetist**

- Only a few additional steps

### **Non-sticky coating on the outside of the liner**

- Liner and socket are easy for the wearer to put on and take off

### **Silky texture on the inside of the liner**

- For improved adhesion and comfort

### **Indications**

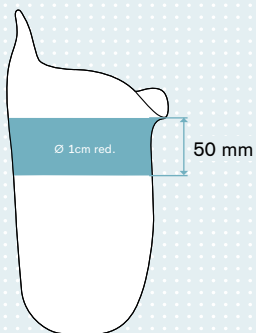
- Transfemoral amputees
- Minimum residual limb length 13 cm
- MOBIS grade 2 – 4
- Recommended for use in vacuum sockets with the **21Y21 ClickValve**

# ProSeal System

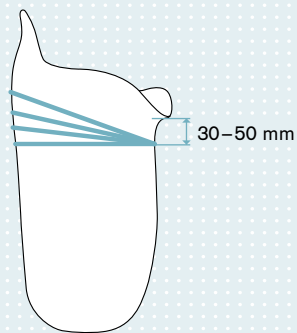
## Excerpt from the Instructions for Use



1



2



### Reducing the Plaster Positive

- We recommend taking the plaster cast over the liner. The socket should be of the ischial containment type. Reduce the circumference of the resulting plaster positive at the proximal 5 cm (measured from the perineum) by 1 cm (2 %). Do not reduce the rest of the plaster positive. The reduction refers to the circumferences measured on the residual limb covered by the liner. (see Fig. 1)
- Pay attention to soft, round shaping when reducing.

### Size selection

#### – on the basis of the plaster positive

- To determine the required ring, measure the circumference 30 – 50 mm below the perineum on the plaster positive (see Fig. 2).
- The rings may be inserted slightly askew to the longitudinal axis of the socket (see Fig. 2). The ring should be at least 30 – 50 mm below the socket brim (perineum region).
- The rings are available in size steps of 2 cm (sizes: 320, 340, 360, 380, 400, 420, 440, 460, 480, 500, 520, 540, 560, 580, 600, 640). Use the next larger size for measurements between the available ring sizes.

### Socket Design

- Position the lamination dummy on the plaster positive so that the Δ marking is pointing toward the distal end.
- The dummy must be perfectly positioned along the entire surface of the plaster positive.
- Now vacuum form or laminate the socket as usual.
- Remove the dummy from the groove.

### Installing the ProSeal Ring

- Thoroughly clean the groove in the socket and the ring with isopropyl alcohol.
- Apply a small amount of silicone bonding agent to the groove in the socket.
- Position the sealing ring in the recess of the socket, with the size label facing up (proximal) (see Fig. 4). Positioning is simplified when the ring is pulled into the recess from distal to proximal.
- Remove extruded silicone and allow to set according to the processing instructions.

### Maintenance Instructions

Inspect the ProSeal ring for cracks and, if necessary, replace it when checking the liner and no later than after one year.

## Ordering Information

The ProSeal system is sold as a set consisting of the ProSeal ring and the ProSeal SIL liner.

### Individual components/spare parts:

#### ProSeal Ring

Sealing ring including separate fixation ring and dummy to create the groove in the socket

Art. No.	Sizes (circumference 30–50 mm below the perineum)			
<b>452A1=*</b>	320	400	480	560
	340	420	500	580
	360	440	520	600
	380	460	540	640

#### ProSeal SIL Liner

Silicone liner, 3 mm wall thickness, no textile components, non-sticky coating on the exterior surface, silky texture of interior surface

Art. No.	Sizes (circumference 40 mm above the distal end of the residual limb)			
<b>6Y81=*</b>	280	340	400	500
	300	360	420	550
	320	380	450	

Recommended for use with the **21Y21 ClickValve** exhaust valve

Otto Bock HealthCare GmbH  
Max-Näder-Straße 15 · 37115 Duderstadt/Germany  
T +49 5527 848-1706 · F +49 5527 72330  
export@ottobock.de · www.ottobock.com